

SERVO SYSTEMS CO.

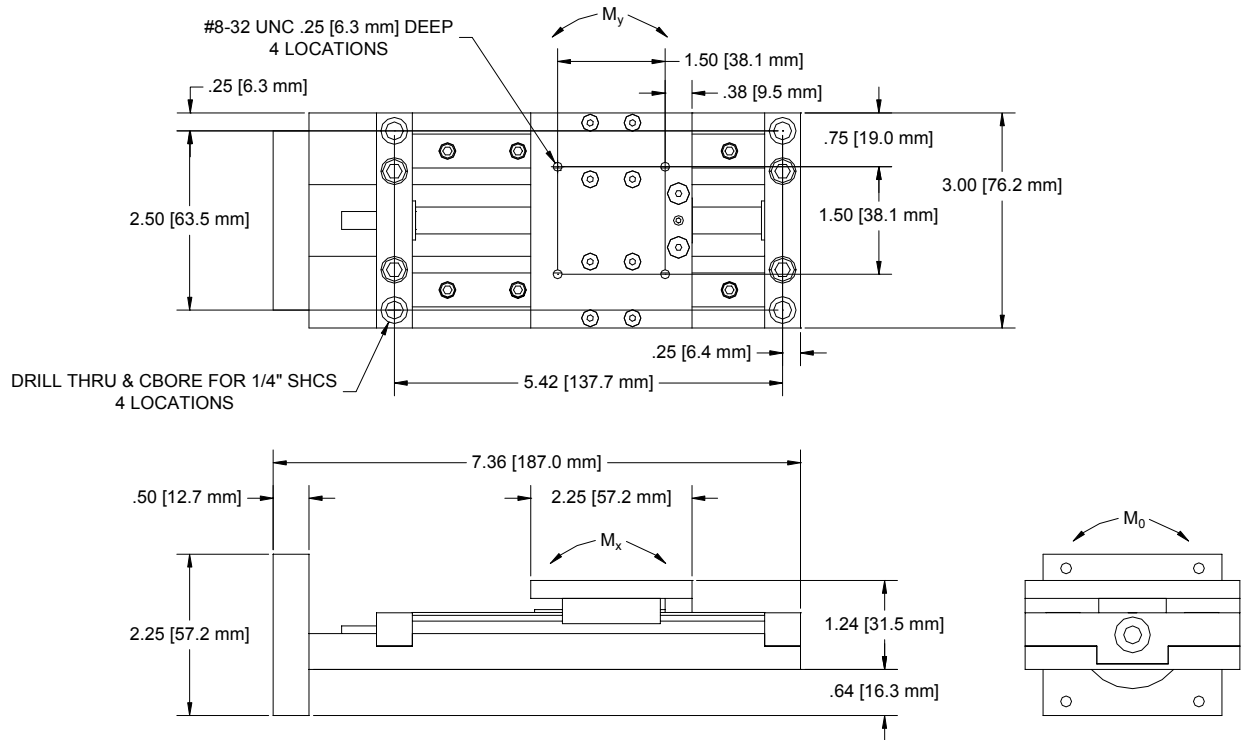
Low Profile Series Miniature Linear Stages

Model: MLPS-2-10

Description: 2 inch travel linear stage with anti-backlash lead-screw assembly, profiled linear rails, and two (one per rail) linear bearings

Motor Mount: Standard NEMA 23

Dimensions:



Specifications:

| | | | |
|------------------------------------------------------------------------|-------------------------------------|------------------------------------|----------------------------------------------------------------------------------------------------------------------------------------------------------------------------------------------------------------------|
| Unit Weight | 1.8 lb. | Linear Speed | 15 in./sec. |
| Moving Mass | 0.372 lb. | Leadscrew Efficiency | 81% |
| Travel Length | 2.68 in. | Bidirectional Repeatability | 0.0005 in. |
| Screw Inertia | 5.963E-06 lb.-in.-sec. ² | Pricing Information | MLPS-2-10* |
| Axial Moment (M_0) | 90.26 in.-lb. | Optional Accessories | MLPS-MFT* Mounting Foot MLPS-xLS* Dual Position Limit / Home Sensors LPS-MCH* Manual Crank Handle LPS-MSH* Motor Shaft Crank Handle - fits 1/4" rear motor shaft |
| Perpendicular Moments (M_x & M_y) | 48.60 in.-lb. | | |
| Maximum Dynamic Load | 10 lb. | | |
| Payload | 9.628 lb. | | |
| Drag Torque | 3 oz.-in. | | |
| Standard Lead | 0.5 in./rev. | | |

Notes: Stock screw pitches come in 1 in., .5 in., .25 in., and .2 in.; other screw pitches available upon request
 *Contact Servo Systems Co. via phone or e-mail for pricing information

