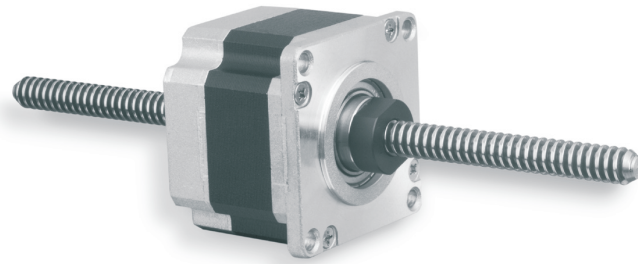


# DuraPlus Linear Actuator

SIZE  
**L2**  
2.22"  
SQ

## High Torque



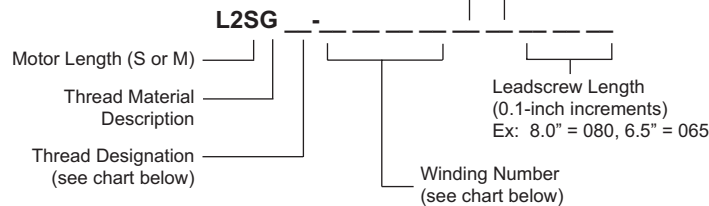
EADmotors high torque Size 23 stepping motors and our new *DuraPlus* system have been combined in our L2 series actuator. The L2 frame *DuraPlus* actuator is a precision engineered device based on a high performance 1.8° stepping motor with an integrated rotating nut. The nut is fabricated from a wide range of optional engineered polymers or SAE 660 bearing bronze to suit the application requirement. The standard polymer used for the catalog offering is Delrin AF. Visit [www.eadmotors.com](http://www.eadmotors.com) for details.

The actuating screw is made of precision rolled steel designed to minimize tolerances in positioning applications. When combined with the polymer nut, the *DuraPlus* system provides longer life and smoother, quieter operation than conventional designs.

Leadscrew lubrication is not required for polymer nuts; however, it is recommended for maximum life. Consult the factory for assistance with choice of lubricants.

Note: Anti-backlash nuts, custom leadscrews, and anti-rotation options are available.

### Part Number Description



Encoder Option	
B	100 CPR
C	200 CPR
E	400 CPR
F	500 CPR
X	No Encoder
* Consult factory for encoder details.	

Standard Leadscrew End Features	
M	1/4-20 UNC-2A
N	1/4-28 UNF-2A
P	M6 x 1.0
R	∅ .235/.236 (6mm)
X	None

## Electrical Ratings

Model Number	Number of Leads	Unipolar Connection				Bipolar Connection				Rotor Inertia (oz-in-sec <sup>2</sup> )	Weight (ounces)
		Phase Voltage (VDC)	Phase Current (amps)	Phase Resistance (ohms)	Phase Inductance (mH)	Phase Voltage (VDC)	Phase Current (amps)	Phase Resistance (ohms)	Phase Inductance (mH)		
L2SG_H05	6	11.90	0.50	23.50	41.4	16.8	0.35	47.00	165.6	0.002	17
L2SG_H1	6	6.00	1.00	6.00	10.8	8.49	0.71	12.00	43.2		
L2SG_H2	6	3.00	2.00	1.57	2.6	4.24	1.41	3.14	10.4		
L2SG_H3	6	1.80	3.00	0.61	1.0	2.55	2.12	1.22	4.0		
L2SG_M100	4					5.80	1.00	5.78	20.3		
L2SG_M200	4					3.00	2.00	1.50	5.2		
L2SG_M300	4					1.80	3.00	0.60	2.0		

H05-H3 available with 4 leads (M05-M3).

## Leadscrew Specifications

Letter Designation	Thread Description*	Thread Lead (inches)	Linear Travel per 1.8° Step (inches)	Unipolar Maximum Force (pounds)	Bipolar Connection Maximum Linear Force (pounds)
Q	3/8-20ACME	0.0500	0.00025	100	125
T	3/8-16ACME	0.0625	0.0003125	98	115
S	3/8-10ACME	0.1000	0.000500	85	100

\* Anti-backlash nuts and custom leadscrew options are available.

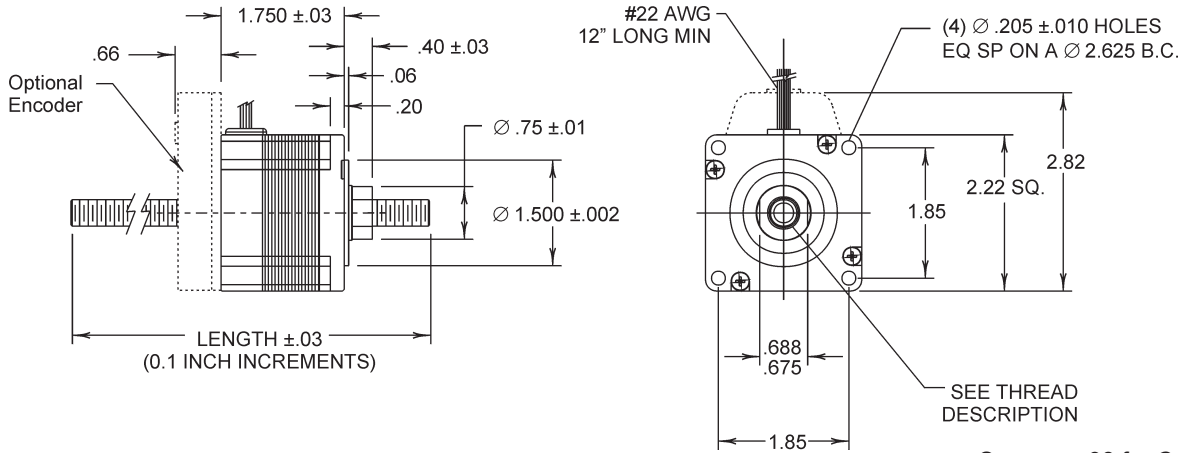
Solutions in motion



# DuraPlus Linear Actuator

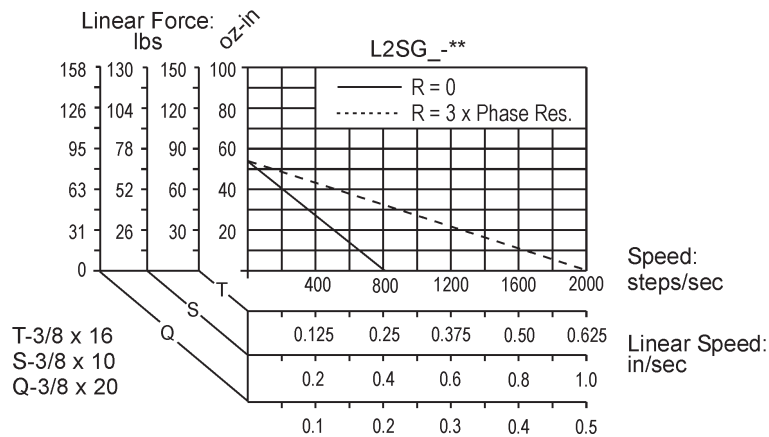
High Torque

SIZE  
**L2**  
**2.22"**  
SQ

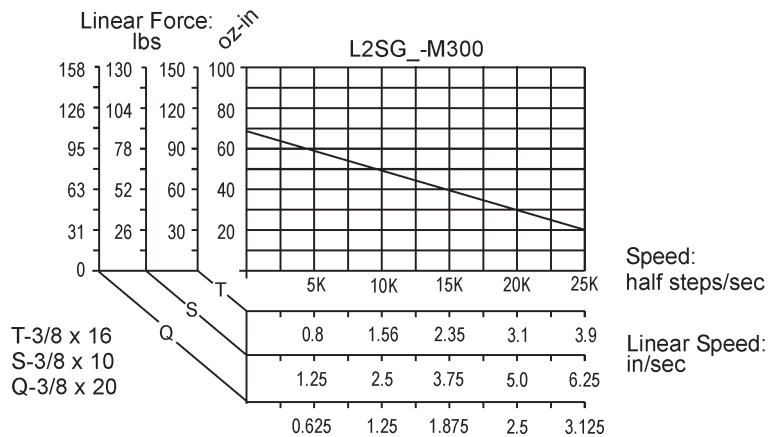


See page 38 for Connection Diagrams.

## Typical Unipolar Performance (6 Lead Motor): Constant Voltage Drive (L/R), 2 Phase On



## Typical Bipolar Performance: 80 VDC Power Supply, 3 Amps/Phase



Solutions in motion

